

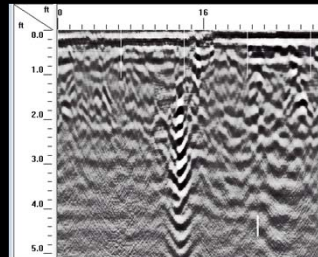
# Using Three-Dimensional GPR Data to Map Remnant Infrastructure and Interpret the Past

Keith C. Seramur  
Seramur & Associates, PC

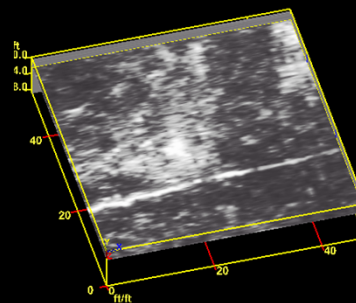
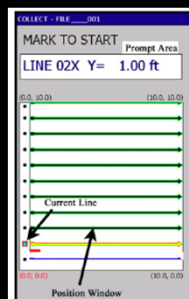


## Reconstructing the Facility Infrastructure Using GPR

### Two-Dimensional Profiles



### Three-Dimensional Surveys



### Preliminary Site Assessments

- Delineate Extent of Soil Contamination
- Estimate Volume of Contaminated Soil

#### Limitations

- Time
- Budget
- Knowledge of Site History



### Former Gas Station in Franklin NC

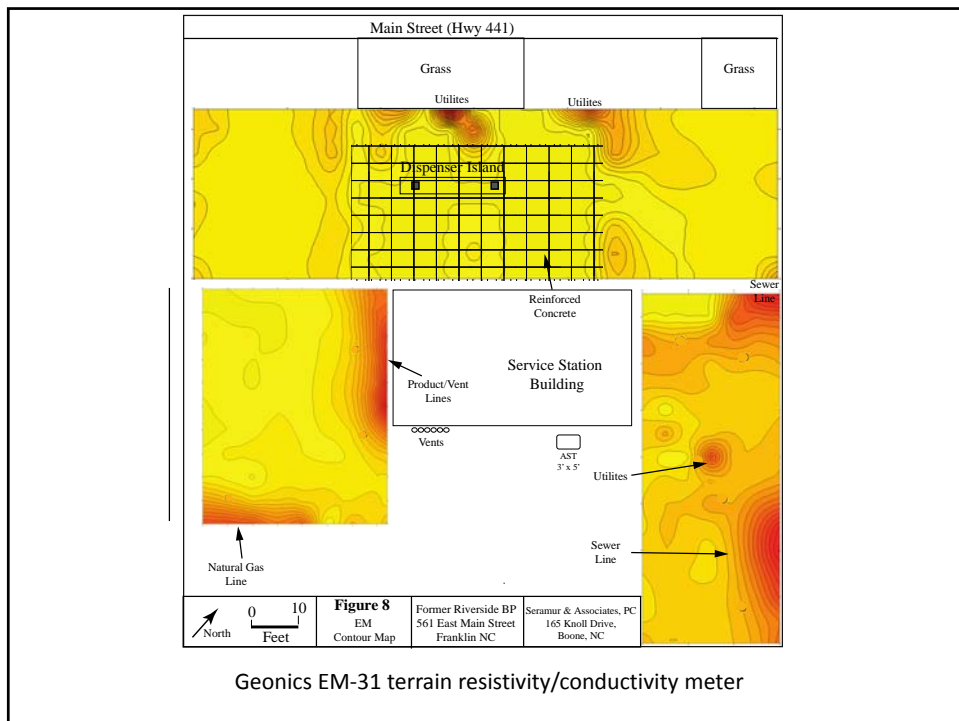
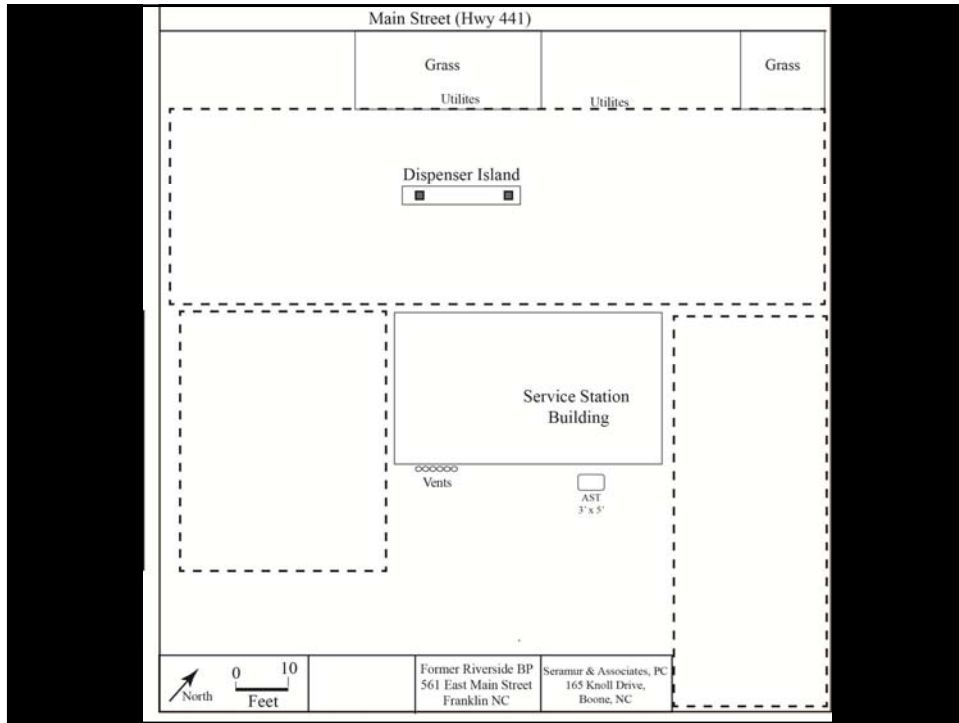


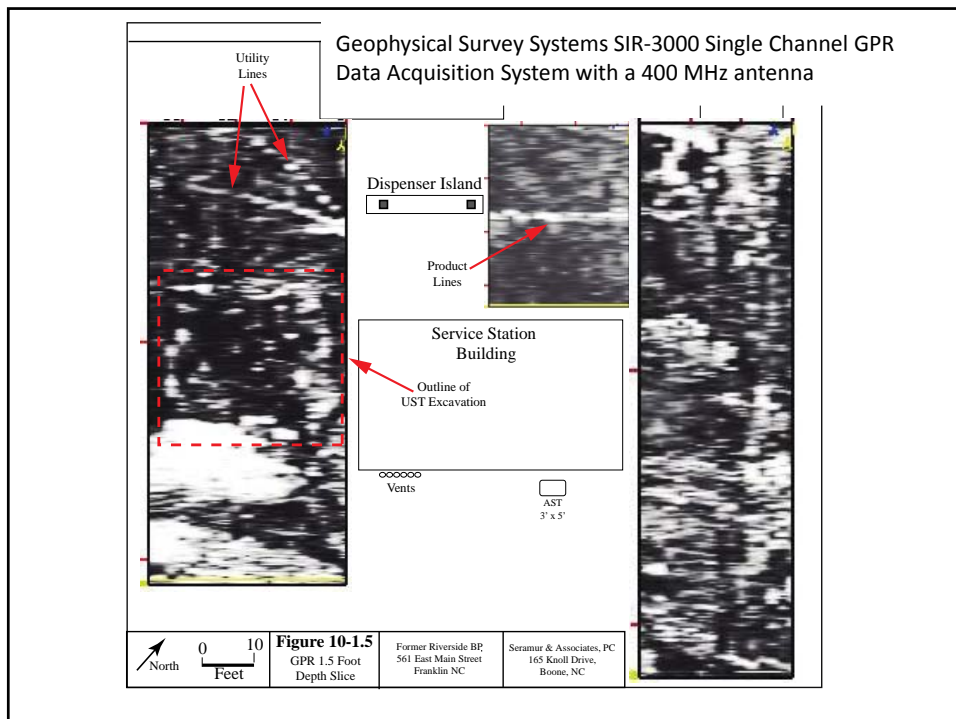
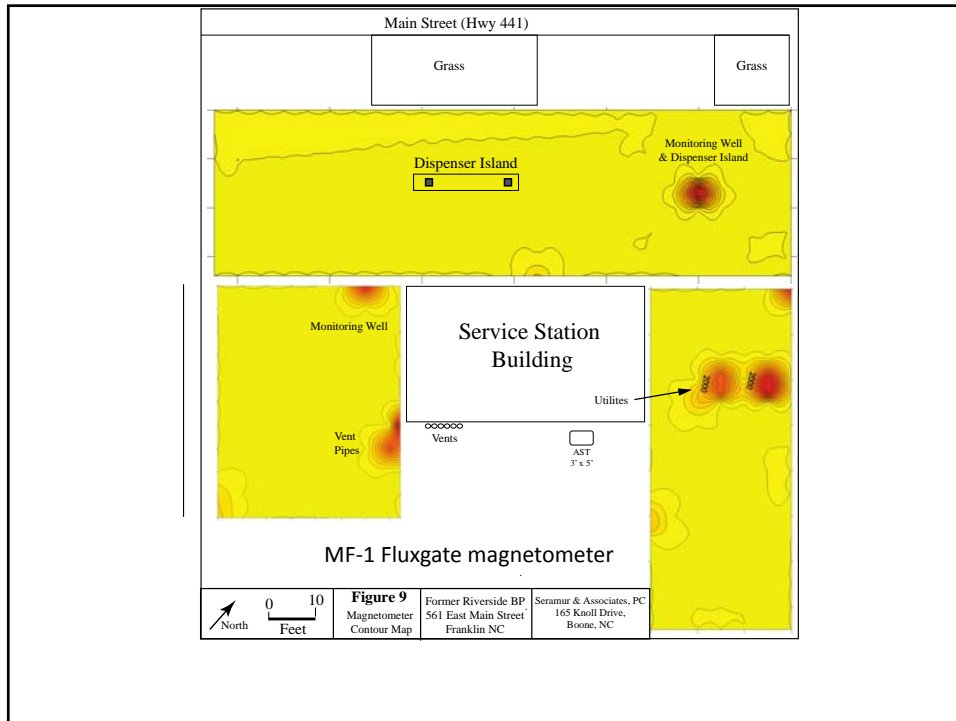
#### Unknown

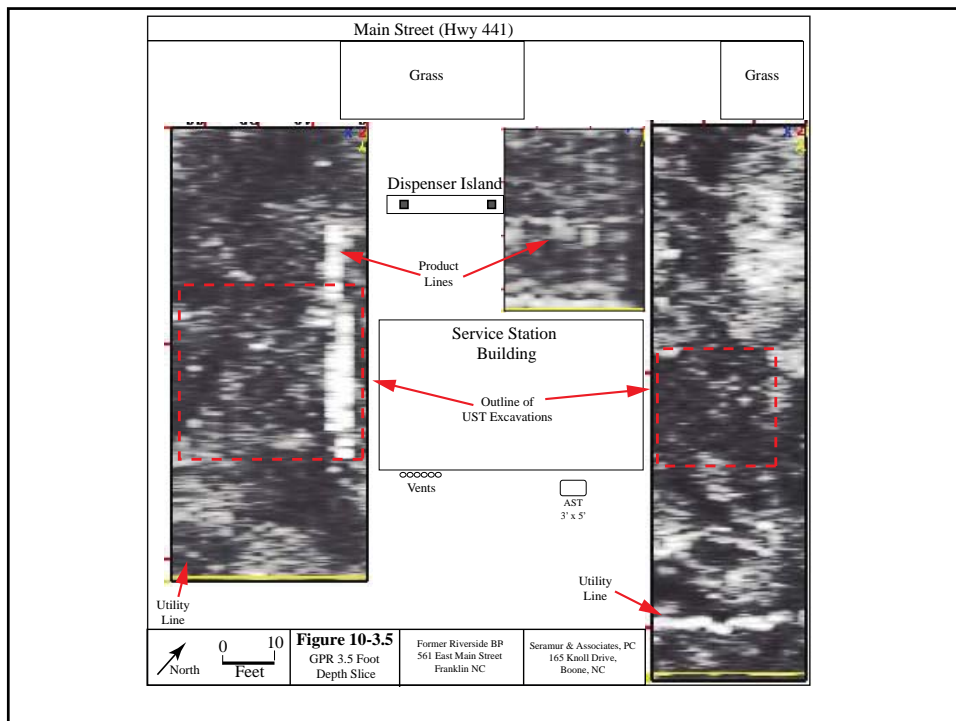
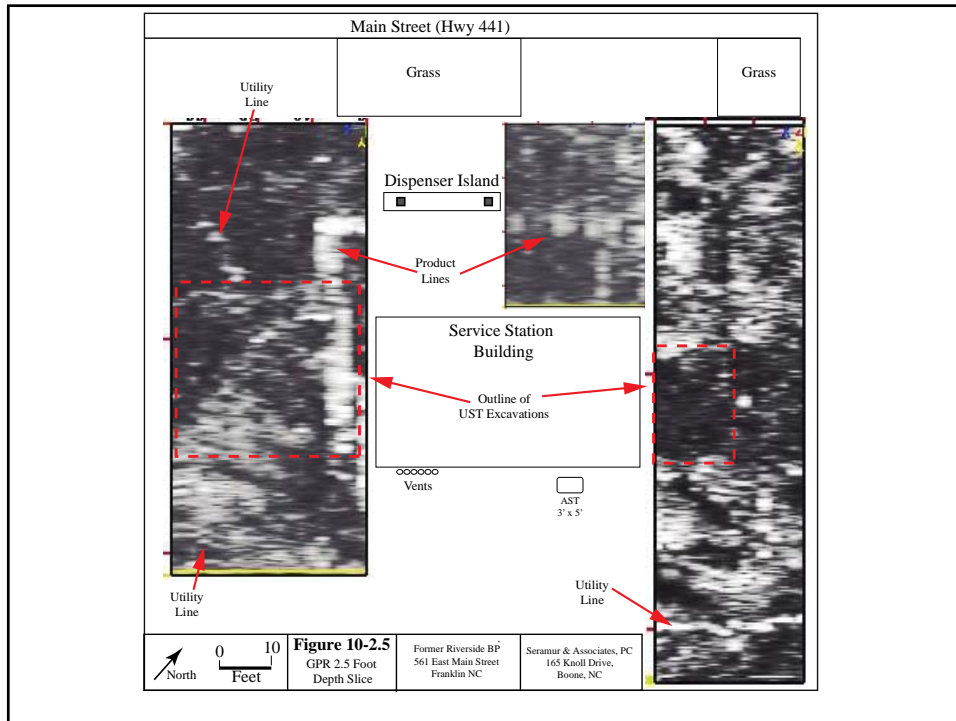
- Number of Tanks
- Number of Tank Pits
- Number of Dispenser Islands

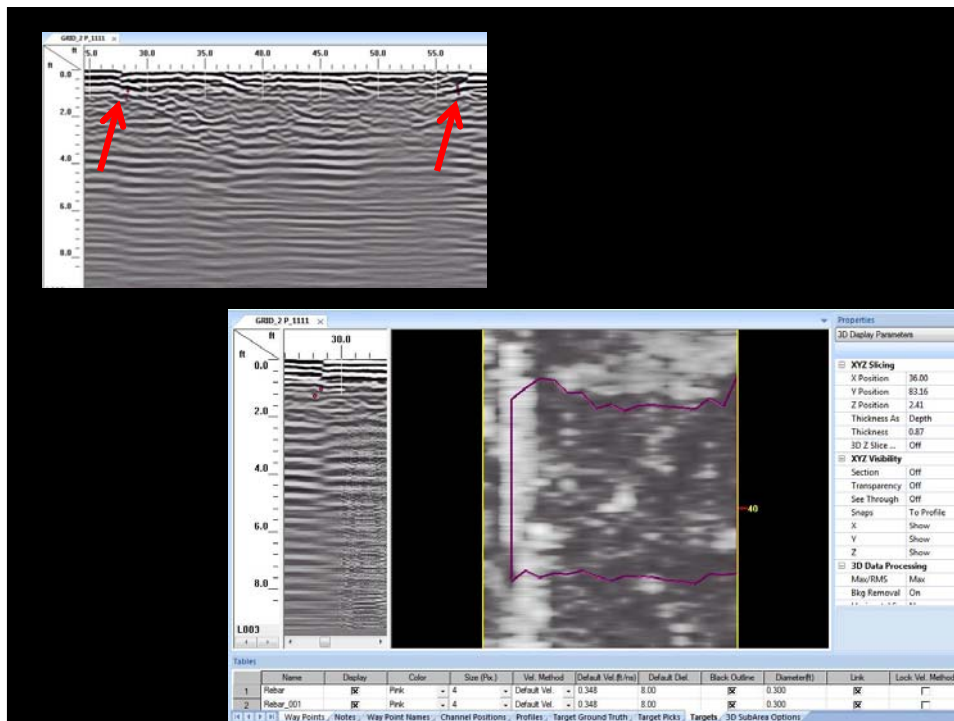
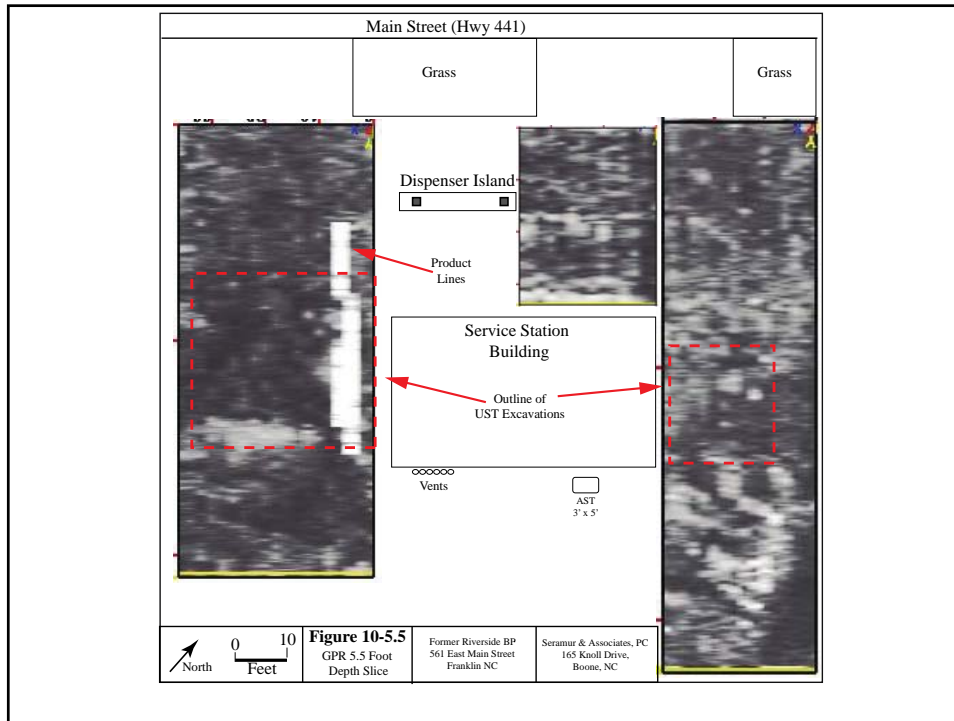
- Re-paved after UST closures
- No surface evidence of tank pits or additional pump islands
- Facility name and Property ownership changed
  - Street numbers changed

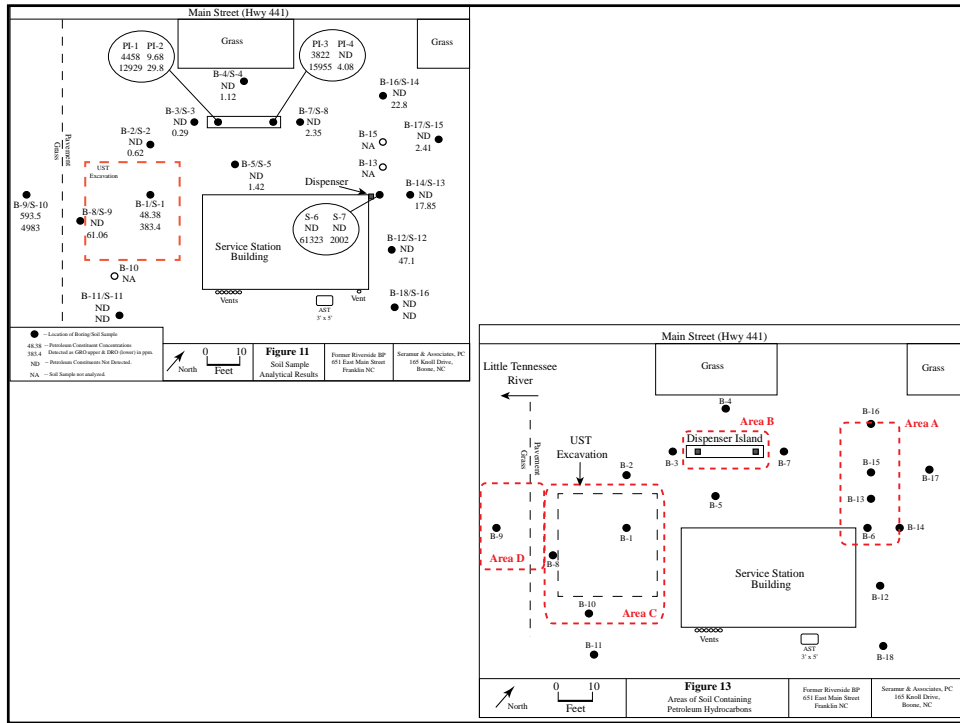




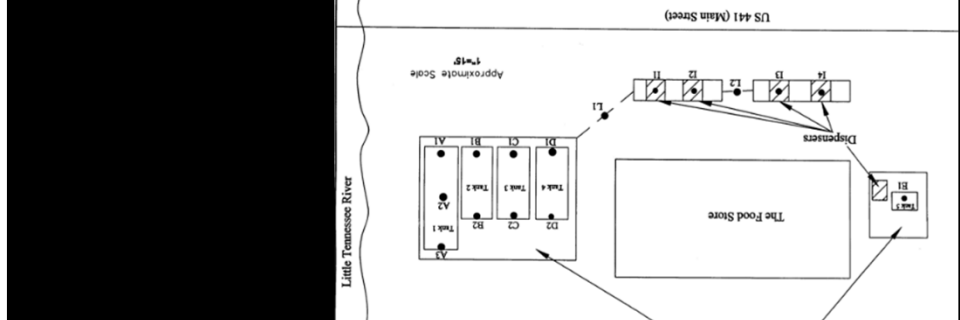








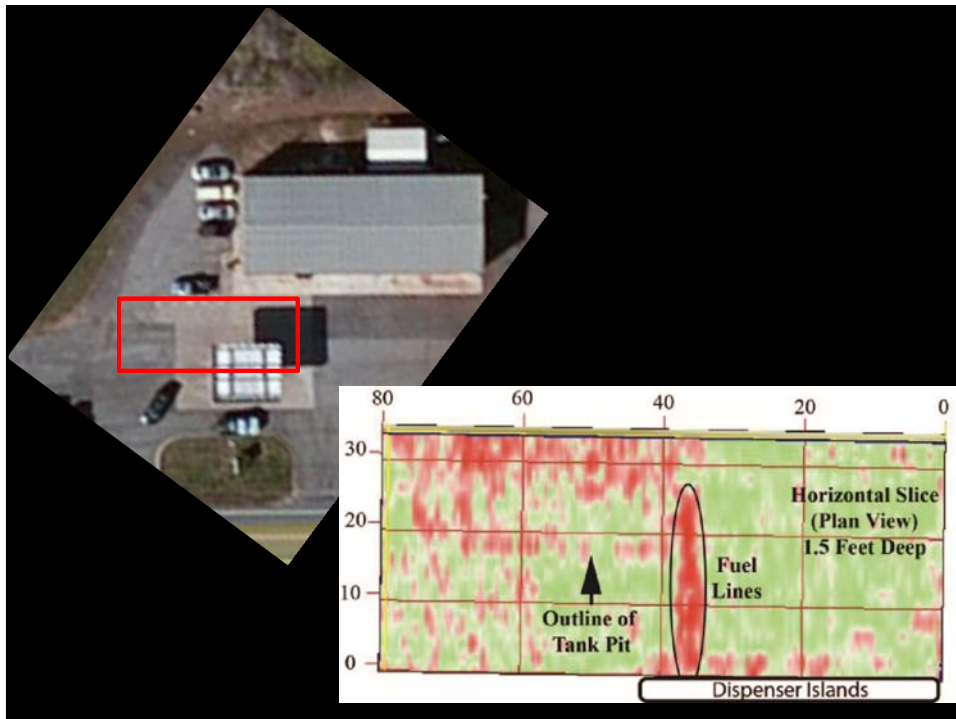
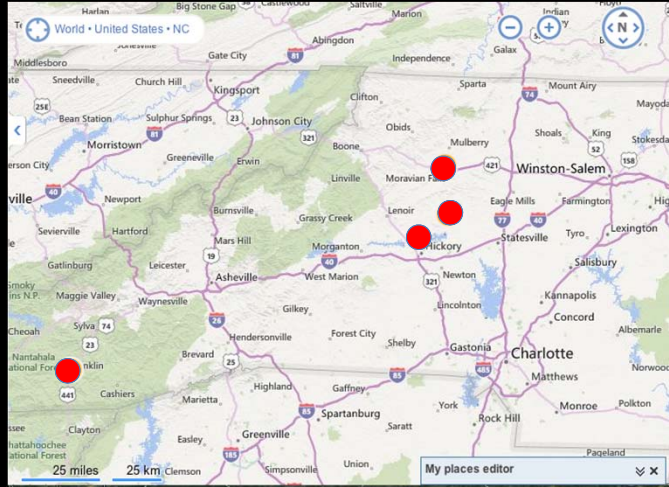
22926	AS-1925	FRANKLIN CITGO SERVICE 0-025190	164 EAST MAIN STREET	FRANKLIN	NC	MACON	287342
22988	AS-1935	CARPENTER RESIDENCE (FORMER)	12 MIMOSA LANE	FRANKLIN	NC	MACON	
23871	AS-2001	RIVERSIDE BP 0-024499	79 SOUTH MAIN STREET	FRANKLIN	NC	MACON	28734
24436	AS-2052	DONS TEXACO 0-014756	US HIGHWAY 64 AND 441	FRANKLIN	NC	MACON	28744
3339	AS-210	PALMER STREET TEXACO 0-014751	US HIGHWAY 64 & PALMER ST	FRANKLIN	NC	MACON	28734

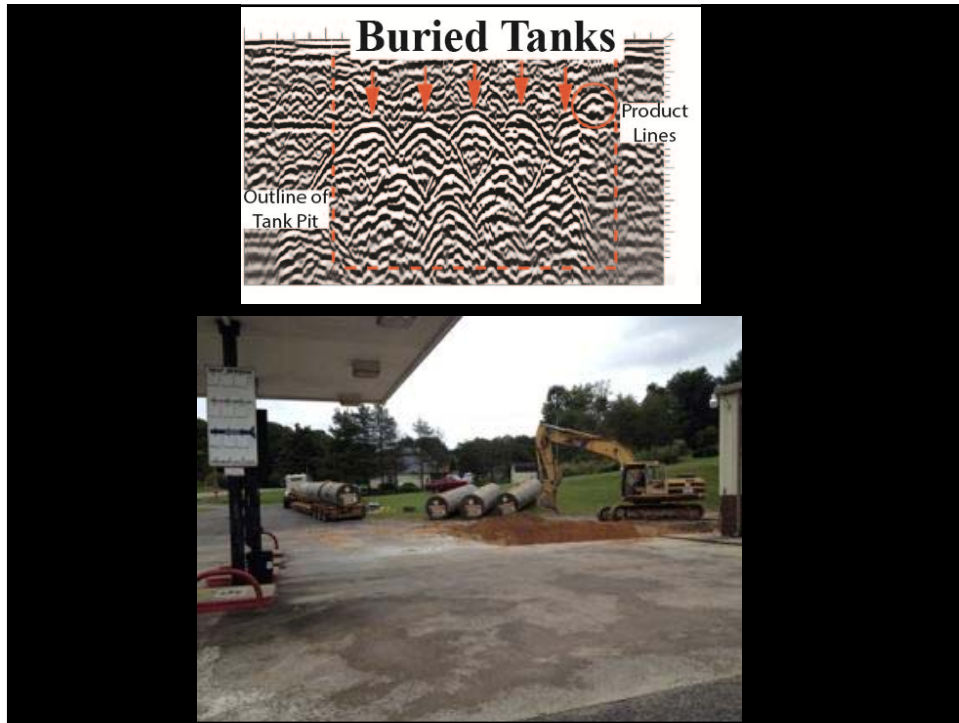


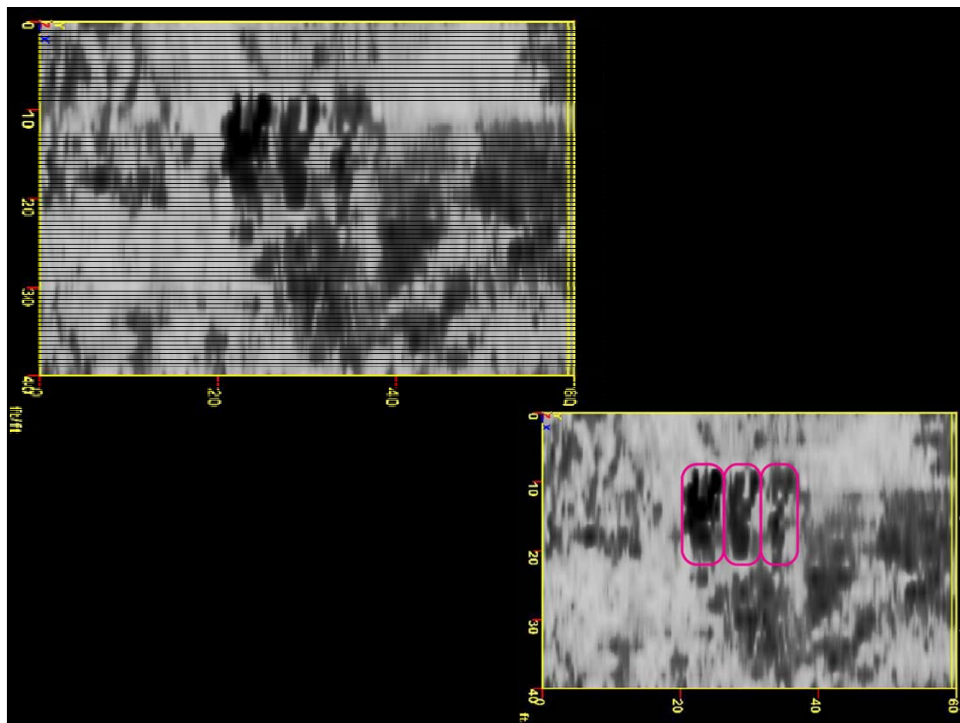
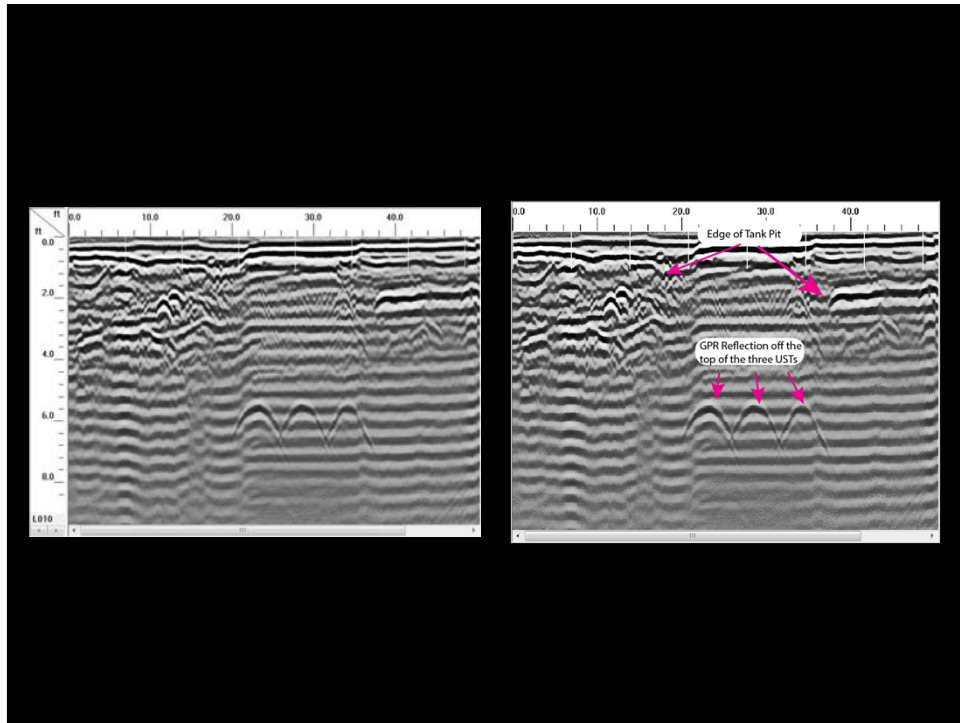


## GPR Surveys in Piedmont Soils

Limited penetration due to clayey soils







### Piedmont Industrial Facility

- Filled Ravine adjacent to the Facility
- Consultant Detected buried Metal

